



venue
AT RICHMOND

LUXURY APARTMENT HOMES



venue
AT RICHMOND

Venue at Richmond sets the precedent for style, prestige, and the ultimate in upscale living. This gated access community offers the perfect balance of modern sophistication and high-speed convenience. Located just south of Sugar Land in Historic Richmond, where you can enjoy the nearby Brazos Bend State Park, First Colony District, Market at Town Center, and unlimited leisure activities. Our perfect location is just off the Grand Parkway, central to the finest shopping, dining, golf courses, and entertainment the area has to offer.

Luxury awaits you at Venue at Richmond! Arrive at your stunning home complimented by the convenience of a direct access garage and private driveway. Inside you will discover quality crafted features that serve as your personal retreat. Your private entry invites you inside with lofty nine-foot ceilings, wood grain flooring, and a spacious, open design. The modern kitchen offers granite counter tops with designer tile back splash, and stainless appliances making every day cooking a pleasure.

The personal spaces offer luxurious baths with soaking tubs, stand-up showers complete with rain showerheads, and plenty of walk-in storage.

Experience an array of high-tech amenities at the expansive Resident Retreat where you can relax by the saltwater pool with Wi-Fi sun scape and California Kitchen or rejuvenate in the fully-equipped Fitness Center to name a few.

Make the change you have been waiting for and call Venue at Richmond home!





INTERIOR FEATURES

Direct Access Garages with Individual Driveways

Custom Glass Showers with Rain Shower Heads and Garden Tubs*

Large Walk-In Closets

Stainless Steel Appliances

Gourmet Kitchens with Granite & Executive Chef Undermount Sink

Upscale Wood Finish Flooring

Custom Routed Wood Cabinetry with Brushed Nickel Hardware

Designer Tile Backsplash in Kitchen

Lofty Nine Foot Ceilings with Crown Molding

Power Saving Digital Programmable Thermostats

Home Intrusion Alarms with Optional Monitoring

2" Plantation Blinds

Ceiling Fans with Lighting in Bedrooms and Living Rooms

Stylish Track and Pendant Lighting

Two Tone Paint Color Scheme

Full Size Washer and Dryer Included

Private Patio or Balcony



COMMUNITY AMENITIES

Car Care Center w/ Pet Spa
Refreshing Saltwater Pool w/Expansive
Wi-Fi Sun deck & Soothing Fountains

Wired for Today's Technology

Drive-Thru Mail Kiosk

Athletic Club: Cardio Theatre,
Resistance and Free Weights

Gourmet Coffee and Hot Tea Bar

Online Rent Payment &
Maintenance Requests

California Outdoor Kitchen

Leisure Courtyards for Outdoor
Grilling and Dining

Resident Retreat w/ Media, Gaming &
Cyber/Business Area



A1L
lower

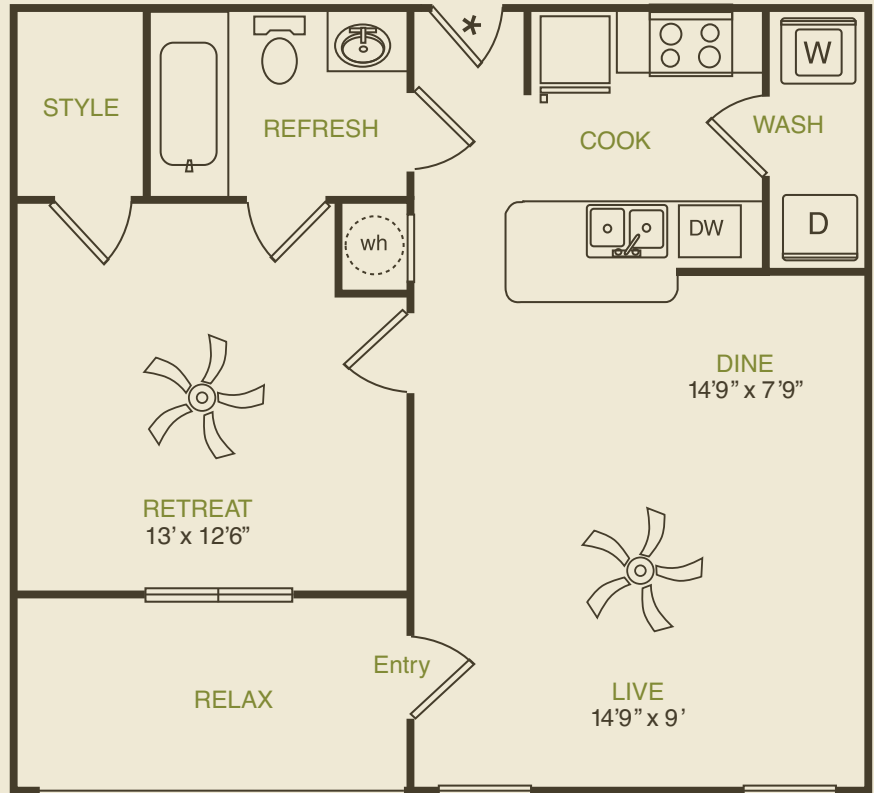
1 Bedroom
1 Bath

with
Attached
Garage

*Private
Garage Entry

667 APPROX
SQFT

*exact dimensions and features
may vary with each floor plan



A1U
upper

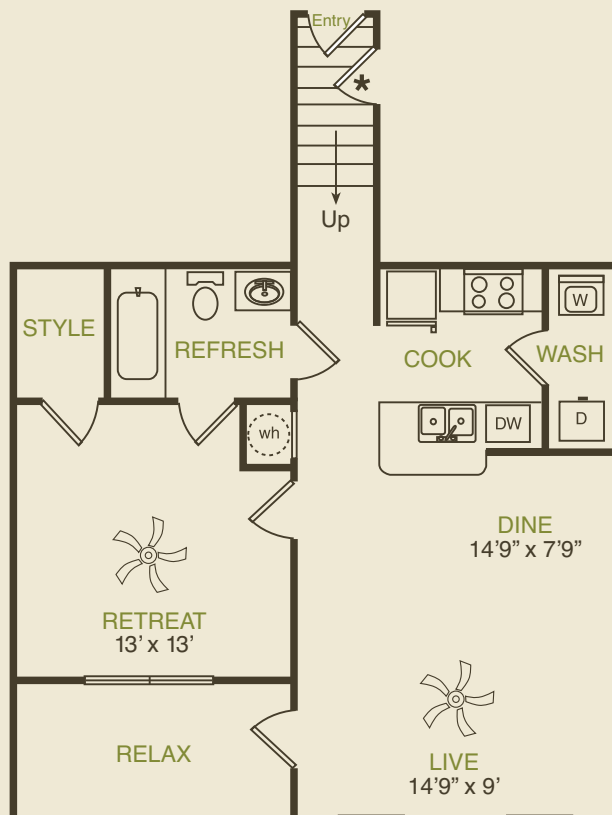
1 Bedroom
1 Bath

with
Attached
Garage

*Private
Garage Entry

814 APPROX
SQFT

*exact dimensions and features
may vary with each floor plan



A2U **A2**
upper

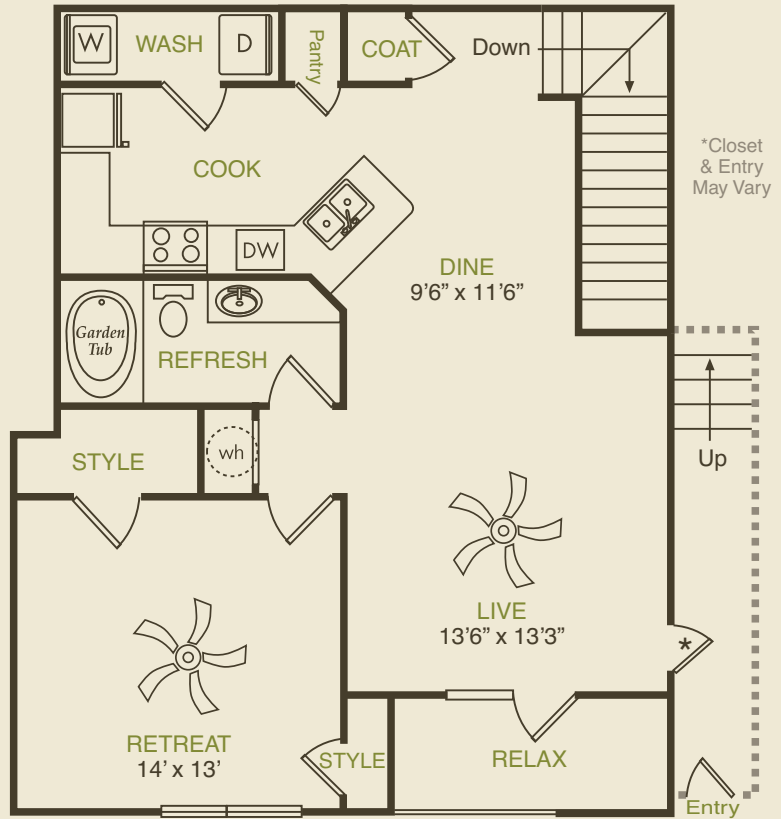
1 Bedroom
1 Bath

with
Attached
Garage

*Private
Garage Entry

955 APPROX
SQFT

*exact dimensions and features
may vary with each floor plan



B1U
B1
upper

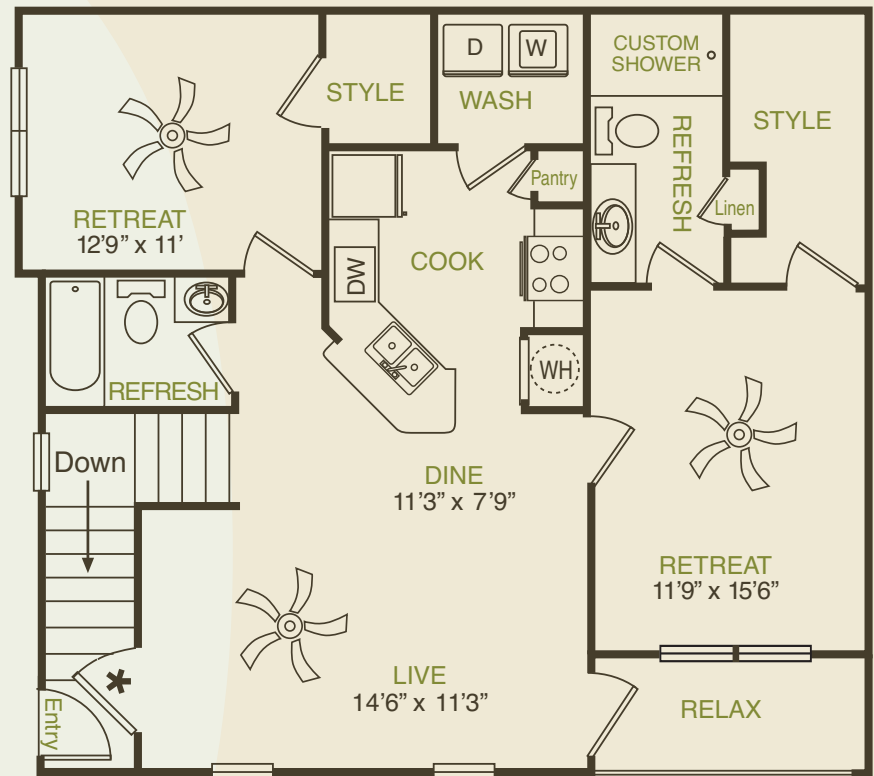
2 Bedroom
2 Bath

with
Attached
Garage

*Private
Garage Entry

1149 APPROX
SQFT

*exact dimensions and features
may vary with each floor plan



B1GA
B1
upper-ALT

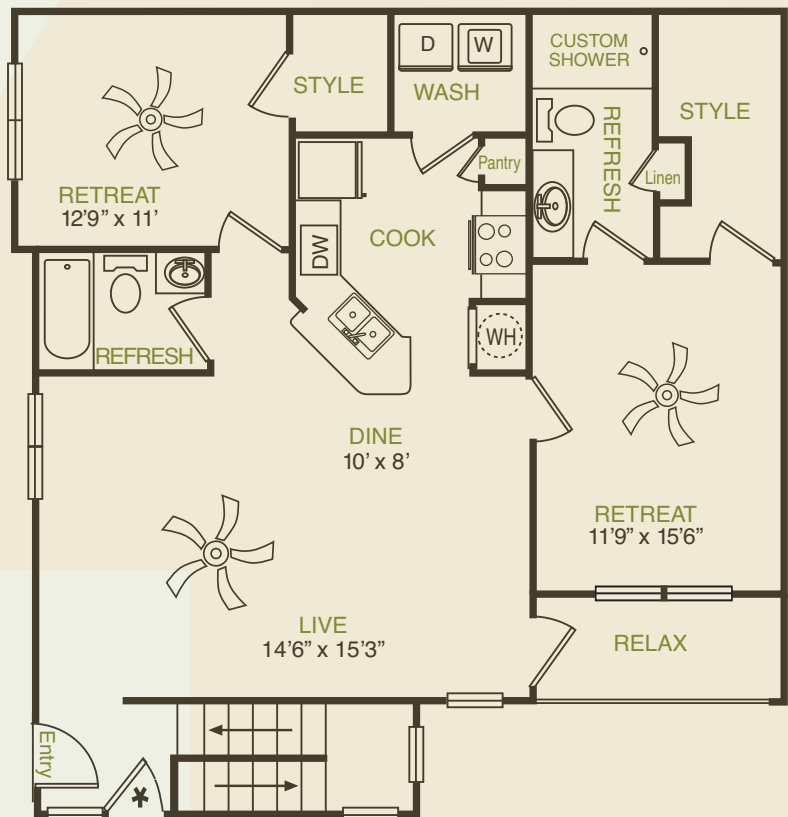
2 Bedroom
2 Bath

with
Attached
Garage

*Private
Garage Entry

1244 APPROX
SQFT

*exact dimensions and features
may vary with each floor plan



B2L
lower

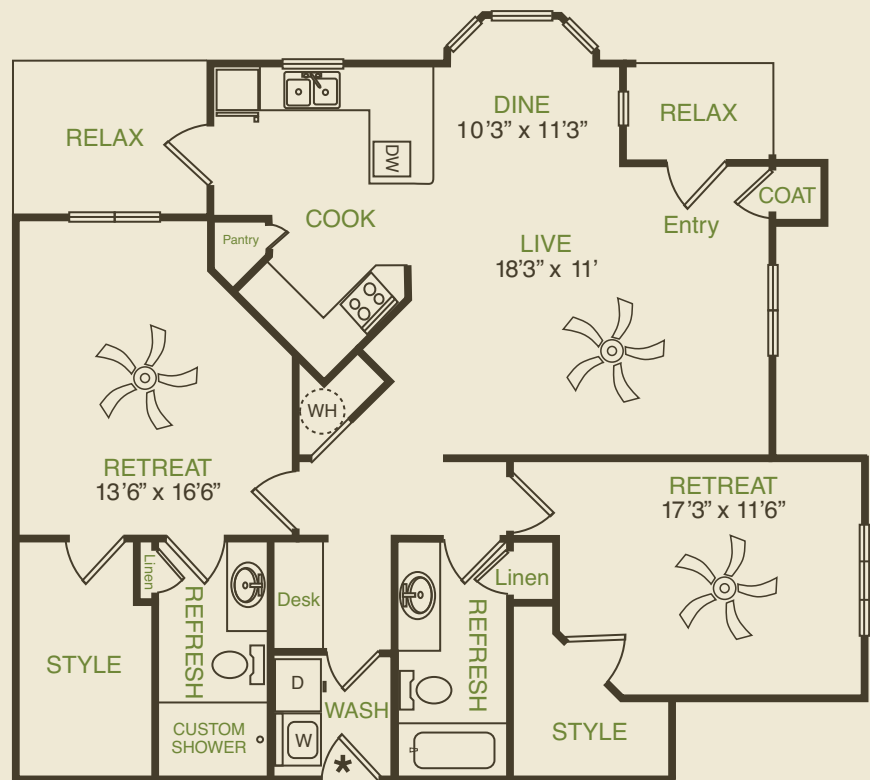
2 Bedroom
2 Bath

with
Attached
Garage

*Private
Garage Entry

1327 APPROX
SQFT

*exact dimensions and features
may vary with each floor plan



B2U
upper

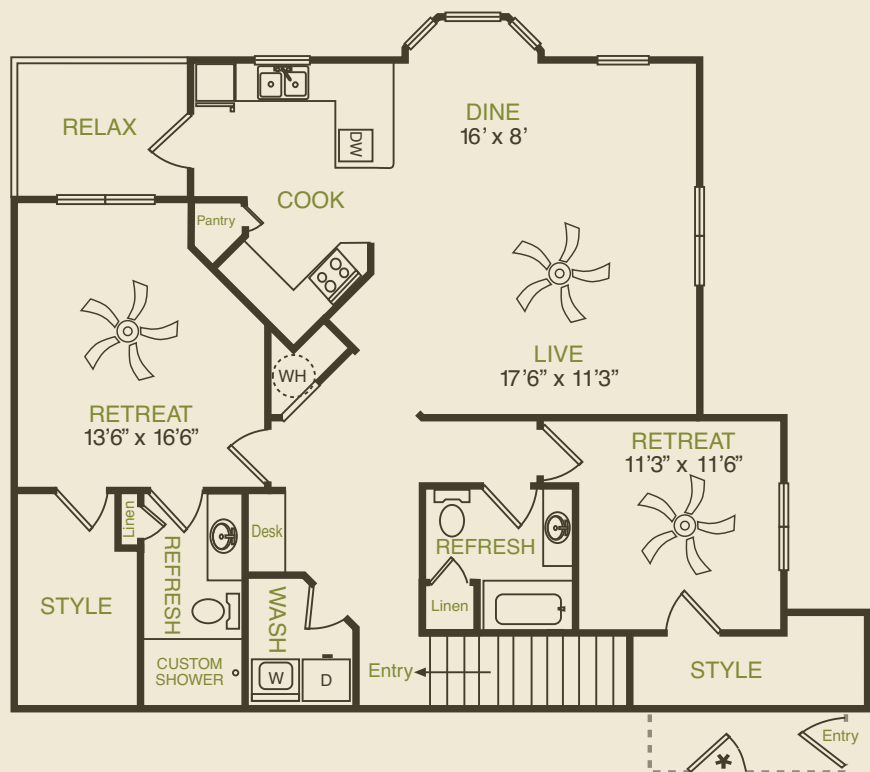
2 Bedroom
2 Bath

with
Attached
Garage

*Private
Garage Entry

1327 APPROX
SQFT

*exact dimensions and features
may vary with each floor plan



C1
lower

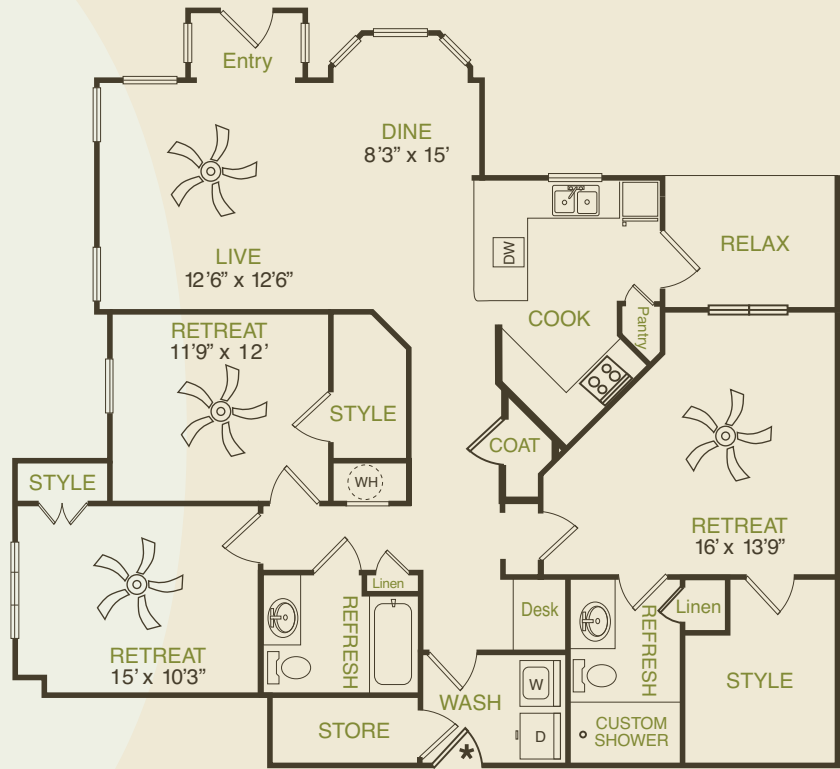
3 Bedroom
2 Bath

with
Attached
Garage

*Private
Garage Entry

1507 APPROX
SQFT

*exact dimensions and features
may vary with each floor plan



C1
upper

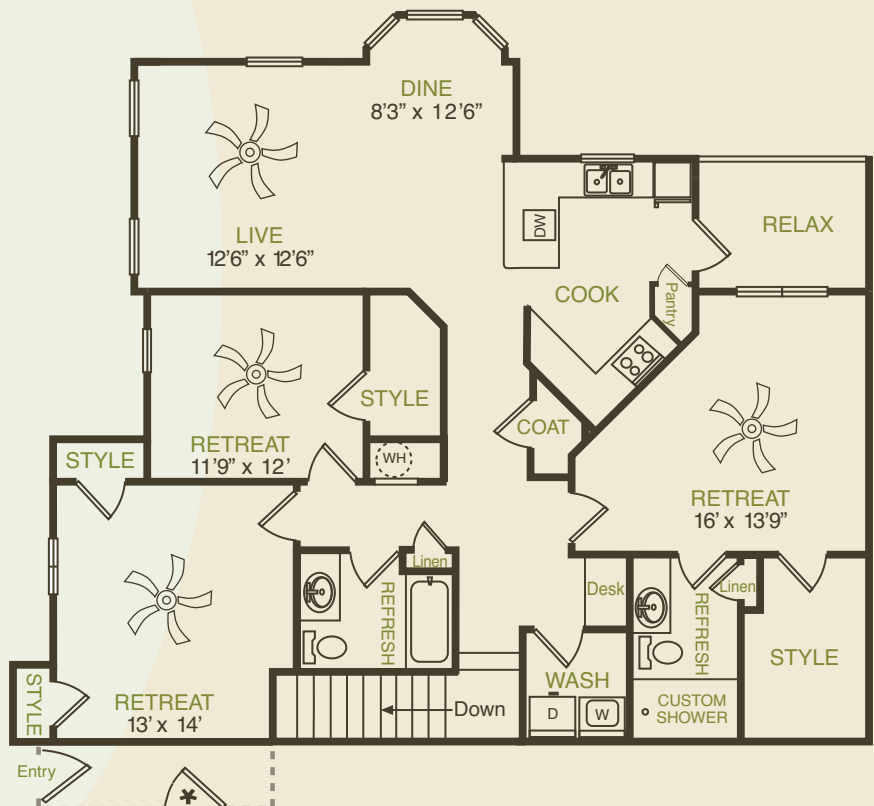
3 Bedroom
2 Bath

with
Attached
Garage

*Private
Garage Entry

1583 APPROX
SQFT

*exact dimensions and features
may vary with each floor plan








venue
AT RICHMOND





venue
AT RICHMOND

5200 Pointe West Circle
Richmond, TX 77469

 281-341-6100
 281-341-6101
 live@venueatrichmond.com
 VenueAtRichmond.com

